



SARAH CLARK
PROPERTY CONSULTANTS

55 |
SHAKESPEARE AVENUE, BRISTOL, BS7 0ER

Available late August- This very well-maintained 2 bedroom furnished apartment is based on this popular development in Horfield with excellent transport links and close to the MOD and Airbus.

The apartment features a spacious and bright dual-aspect living area with a Juliet balcony and attractive bay window, creating a light and welcoming space. The modern kitchen is set just off the lounge and is fitted with integrated appliances.

The generous master bedroom benefits from a practical en-suite shower room, while the second bedroom is best suited to a single bed, making it ideal as a guest room, child's bedroom, or home office. A contemporary family bathroom with a white suite serves the rest of the apartment.

In the hallway two built-in cupboards provide useful storage space. The property benefits from access to a secure communal courtyard and includes designated clothes drying areas for residents. The apartment comes with an allocated parking space.

This is a great apartment in a very good location.



Features

- Available late August
- Bright, dual aspect living area
- Juliet balcony
- Two bedroom
- En-suite and Family Bathroom
- Allocated parking





TENURE

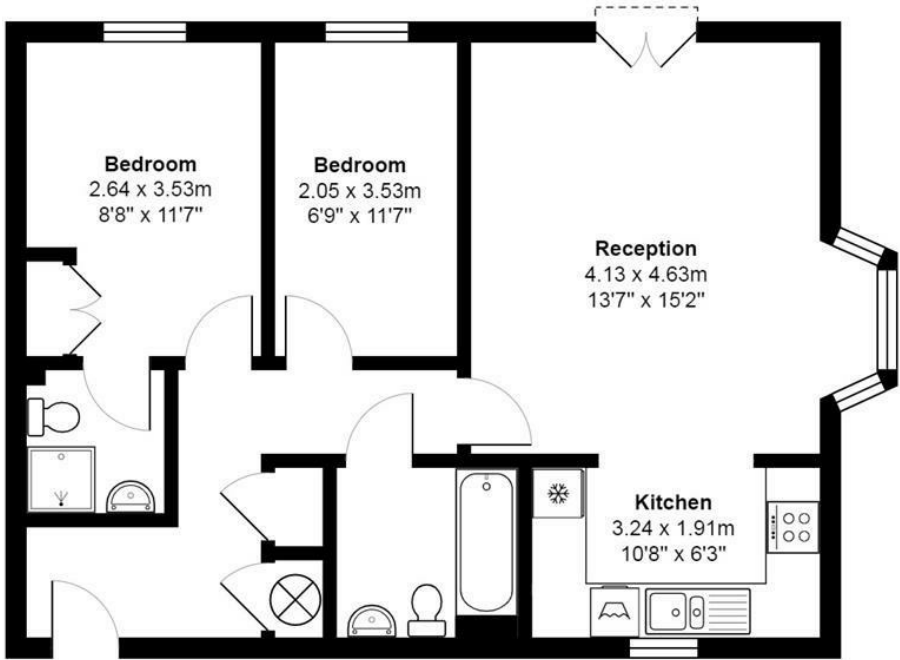
SERVICES

Customise to type text here

LOCAL AUTHORITY

Customise to type text here

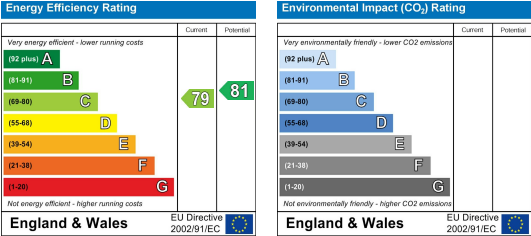
55 Shakespeare Avenue



First Floor

Total Area: 60.8 m² ... 655 ft²

All measurements of walls, doors, windows, fittings and appliances, their size and locations are approximate and cannot be regarded as being an accurate representation neither by the vendor nor their agent.
www.inovusproperty.co.uk



IMPORTANT: we would like to inform prospective purchasers that these sales particulars have been prepared as a general guide only. A detailed survey has not been carried out, nor the services, appliances and fittings tested. Room sizes should not be relied upon for furnishing purposes and are approximate. If floor plans are included, they are for guidance only and illustration purposes only and may not be to scale. If there are any important matters likely to affect your decision to buy, please contact us before viewing the property.